

Model AM1

Owner's Guide

limited lifetime consumer warranty

Directed Electronics, Inc. promises to the original purchaser to repair or replace with a comparable reconditioned model any Directed Electronics, Inc. unit (hereafter the "unit"), excluding without limitation the siren, the remote transmitters, the associated sensors and accessories, which proves to be defective in workmanship or material under reasonable use during the lifetime of the vehicle provided the following conditions are met: the unit was professionally installed and serviced by an authorized Directed Electronics dealer; the unit will be professionally reinstalled in the vehicle in which it was originally installed by an authorized Directed Electronics dealer; and the unit is returned to Directed Electronics, Inc., shipping prepaid with a legible copy of the bill of sale or other dated proof of purchase bearing the following information: consumer's name, telephone number and address; the authorized dealers name, telephone number and address; complete product description, including accessories; the year, make and model of the vehicle; vehicle license number and vehicle identification number. All components other than the unit, including without limitation the siren, the remote transmitters and the associated sensors and accessories, carry a one-year warranty from the date of purchase of the same. This warranty is non-transferable and is automatically void if: the original purchaser has not completed the warranty card and mailed it within ten (10) days of the date of purchase to the address listed on the card; the unit's date code or serial number is defaced, missing or altered; the unit has been modified or used in a manner contrary to its intended purpose; the unit has been damaged by accident, unreasonable use, neglect, improper service, installation or other causes not arising out of defects in materials or construction. The warranty does not cover damage to the unit caused by installation or removal of the unit. Directed Electronics, Inc., in its sole discretion, will determine what constitutes excessive damage and may refuse the return of any unit with excessive damage. TO THE MAXIMUM EXTENT ALLOWED BY LAW, ALL WARRANTIES, INCLUDING BUT NOT LIMITED TO EXPRESS WARRANTY, IMPLIED WARRANTY, WARRANTY OF MERCHANTABILITY, FITNESS FOR PARTICULAR PURPOSE AND WARRANTY OF NON-INFRINGEMENT OF INTELLECTUAL PROPERTY, ARE EXPRESSLY EXCLUDED; AND DIRECTED ELECTRONICS, INC. NEITHER ASSUMES NOR AUTHORIZES ANY PERSON OR ENTITY TO ASSUME FOR IT ANY DUTY, OBLIGATION OR LIABILITY IN CONNECTION WITH ITS PRODUCTS. DIRECTED ELECTRONICS, INC. DISCLAIMS AND HAS ABSOLUTELY NO LIABILITY FOR ANY AND ALL ACTS OF THIRD PARTIES INCLUDING ITS AUTHORIZED DEALERS OR INSTALLERS. DIRECTED ELECTRONICS, INC. SECURITY SYSTEMS, INCLUDING THIS UNIT, ARE DETERRENTS AGAINST POSSIBLE THEFT. DIRECTED ELECTRONICS, INC. IS NOT OFFERING A GUARANTEE OR INSURANCE AGAINST VANDALISM, DAMAGE OR THEFT OF THE AUTOMOBILE, ITS PARTS OR CONTENTS; AND HEREBY EXPRESSLY DISCLAIMS ANY LIABILITY WHATSOEVER, INCLUDING WITHOUT LIMITATION, LIABILITY FOR THEFT, DAMAGE

AND/OR VANDALISM. THIS WARRANTY DOES NOT COVER LABOR COSTS FOR MAINTENANCE, REMOVAL OR REINSTALLATION OF THE UNIT OR ANY CONSEQUENTIAL DAMAGES OF ANY KIND. IN THE EVENT OF A CLAIM OR A DISPUTE INVOLVING DIRECTED ELECTRONICS, INC. OR ITS SUBSIDIARY, THE PROPER VENUE SHALL BE SAN DIEGO COUNTY IN THE STATE OF CALIFORNIA. CALIFORNIA STATE LAWS AND APPLICABLE FEDERAL LAWS SHALL APPLY AND GOVERN THE DISPUTE. THE MAXIMUM RECOVERY UNDER ANY CLAIM AGAINST DIRECTED ELECTRONICS, INC. SHALL BE STRICTLY LIMITED TO THE AUTHORIZED DIRECTED ELECTRONICS DEALER'S PURCHASE PRICE OF THE UNIT. DIRECTED ELECTRONICS, INC. SHALL NOT BE RESPONSIBLE FOR ANY DAMAGES WHATSOEVER, INCLUDING BUT NOT LIMITED TO, ANY CONSEQUENTIAL DAMAGES, INCIDENTAL DAMAGES, DAMAGES FOR THE LOSS OF TIME, LOSS OF EARNINGS, COMMERCIAL LOSS, LOSS OF ECONOMIC OPPORTUNITY AND THE LIKE. NOTWITHSTANDING THE ABOVE, THE MANUFACTURER DOES OFFER A LIMITED WARRANTY TO REPLACE OR REPAIR THE CONTROL MODULE AS DESCRIBED ABOVE. Some states do not allow limitations on how long an implied warranty will last or the exclusion or limitation of incidental or consequential damages. This warranty gives you specific legal rights and you may also have other rights that vary from State to State.

This product may be covered by a Guaranteed Protection Plan ("GPP"). See your authorized Directed Electronics dealer for details of the plan or call Directed Electronics, Inc. Customer Service at 1-800-876-0800. Directed Electronics, Inc. security systems, including this unit, are deterrents against possible theft. Directed Electronics, Inc. is not offering a guarantee or insurance against vandalism, damage or theft of the automobile, its parts or contents; and hereby expressly disclaims any liability whatsoever, including without limitation, liability for theft, damage and/or vandalism. Directed Electronics, Inc. does not and has not authorized any person or entity to create for it any other obligation, promise, duty or obligation in connection with this security system.

Make sure you have all of the following information from your dealer:

A clear copy of the sales receipt, showing the following:

- Date of purchase
- Your full name and address
- Authorized dealer's company name and address
- Type of alarm installed
- Year, make, model and color of the automobile
- Automobile license number
- Vehicle identification number
- All security options installed on automobile
- Installation receipts

contents

limited lifetime consumer	nuisance prevention circuitry® . . . 7
warrantyi	diagnostics9
trademarks and copyrights1	arming diagnostics9
what is included2	disarming diagnostics9
important information2	table of zones10
using your system3	rapid resume logic10
manual (active) arming3	programming options11
automatic (passive) arming3	programming settings11
armed protection4	glossary of terms13
disarming5	notes14
disarming without a	
transmitter5	
valet® mode6	
remote valet®6	
panic mode7	

trademarks and copyrights

Code-Hopping™, Directed®, Doubleguard®, FailSafe®, Nuisance Prevention Circuitry®, NPC®, Silent Mode™, Soft Chirp®, Stealth Coding™, Stinger®, Valet®, and Warn Away® are all Trademarks or Registered Trademarks of Directed Electronics, Inc.

what is included

- Control module and harness
- A Stinger® dual stage shock sensor (on-board the control module)
- Pre-wired Valet® switch with integrated red status LED
- Failsafe® Starter Kill relay (if equipped)

important information

Congratulations on the purchase of your security system. Due to the complexity of this system, it must be installed by an authorized dealer only. Installation of this product by anyone other than an authorized dealer voids the warranty. All dealers are provided with a preprinted dealer certificate to verify that they are authorized.

By carefully reading this Owner's Guide prior to using your system, you will maximize the use of this system and its features.

You can print additional or replacement copies of this manual by accessing the Directed web site at www.directed.com.

using your system

manual (active) arming

The factory default is active arming. In this mode you can activate, or arm, the system by locking the doors with your factory keyless entry transmitter. When the system arms, you will hear a short horn honk and see the parking lights flash once. While the system is armed, the status LED will flash about twice a second, showing that the system is actively protecting your vehicle. If you hear a second short horn honk after arming, and see the status LED flashing in groups, see Diagnostics section. This extra short horn honk is called Bypass Notification.

***note:** If the ignition is turned on within 60 seconds of arming the system, the system will automatically disarm.*

automatic (passive) arming

The system also can be programmed to arm itself automatically (called passive arming). If the system is programmed for passive arming, it will automatically arm 30 seconds after the ignition is turned off and the system “sees” you leave the vehicle by opening and closing a door. Whenever the system is in its 30-second passive-arming countdown, the status LED will flash twice as fast as it does when the system is armed. When the system arms, you will hear a short horn honk and the parking lights will flash once. The doors lock (if connected and programmed for passive locking).

***note:** Passive arming may qualify for a higher insurance discount. Check with your insurance agent*

note: If any protected entry point (such as a door or a switch-protected trunk or hood) is open, the system will not passively arm. Additionally, each time a sensor is triggered during the arming countdown, the 30-second countdown starts over.

armed protection

When armed, your vehicle is protected as follows:

- Light impacts to your vehicle will trigger the warn away signal. The system will pulse the horn and flash the parking lights for a few seconds.
- Heavy impacts will trigger the system. The triggered sequence is 30 or 60 seconds of constant horn honking and flashing parking lights.
- If a door is opened, the system will immediately start pulsing the horn and flashing the parking lights. Three seconds later, the horn output changes to a continuous blast. This progressive response gives you time to disarm the system with your transmitter if you inadvertently open the door while the system is armed, while still providing instant response (even if the door is immediately closed).

note: If programmed for instant trigger, the horn will output full trigger response after the door has been opened (see Programming Options)

- Turning on the ignition key triggers the same progressive response as opening a door.
- If equipped, the starter interrupt prevents the vehicle's starter from cranking.

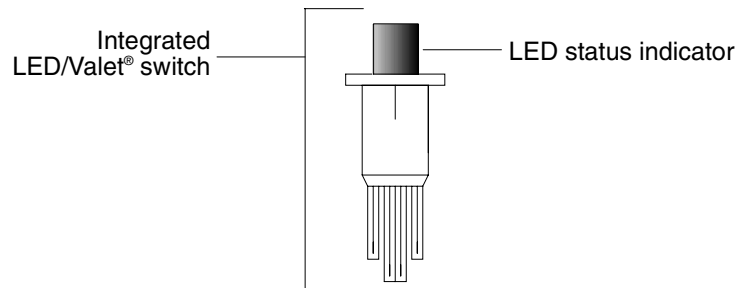
note: The vehicle may already be equipped with a starter kill relay from the factory.

disarming

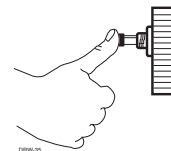
To disarm the system, unlock the doors using your factory keyless transmitter. The horn will sound twice, and the parking lights will flash twice. If the horn sounds either four or five times when disarming, refer to the Diagnostics section of this guide. This is called Tamper Alert.

disarming without a transmitter

This feature allows you to override the system without the transmitter should it be lost, damaged or disabled. To do this, you must have the vehicle's ignition key and know where the integrated LED/Valet® switch is located. The Valet® switch is activated by pressing the LED status indicator.



Turn the ignition to the "run" position. Press and release the integrated LED/Valet® switch, within 10 seconds.



After a few seconds the LED will stop

flashing and the vehicle should start. If it does not, you may have waited too long. Turn the ignition off and try again.

note: The setting for the number of times the integrated LED/Valet® switch must be pressed is set in the Programming Section of this guide.

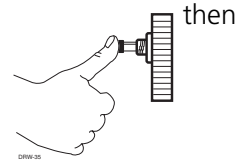
valet® mode

You can prevent your system from arming, by using Valet® Mode. This is very useful when washing the vehicle or having it serviced. In Valet® Mode, the system will not arm, even with the transmitter, but all convenience functions (door locks, trunk release, etc.) will work normally.

To enter or exit Valet® Mode with the integrated LED/Valet® switch:



Turn ignition to "on" position, turn to "off" position. Press and release the integrated LED/Valet® switch within 10 seconds. The status LED will



light steady if you have entered Valet® Mode. To exit Valet® Mode, repeat the steps above. The LED will turn off when exiting Valet® Mode.

remote valet®

Remote Valet® is a convenient feature that makes bypassing the security system easier. This feature makes it possible to exit or enter Valet® Mode using your factory keyless transmitter.

1. Open any door.
2. Press LOCK on the transmitter.
3. Press UNLOCK on the transmitter.
4. Press LOCK on the transmitter.

The status LED will stay on if you have entered Valet® Mode, and it will go out if you exited Valet® Mode.

***note:** The remote Valef® feature will not work with all factory keyless entry systems. Some keyless entry systems do not work with a door open.*

panic mode

If you are threatened in or near your vehicle, you can attract attention by triggering the system with your transmitter! If your factory keyless transmitter does not have a panic button, this system can be programmed to enable a panic feature (refer to the Programming Options).

If enabled, just press the lock button on your factory keyless transmitter twice within three seconds to enter Panic Mode. The horn will sound and the parking lights will flash for 30 seconds. To stop Panic Mode at any time, press the unlock button on your factory transmitter.

***note:** The system can also be programmed so that pressing the lock button twice within three seconds will activate an optional accessory. If the unit is programmed to activate an optional accessory, Panic Mode will not be operational.*

nuisance prevention circuitry®

Your system has Nuisance Prevention Circuitry® (NPC®). This circuitry prevents annoying repetitive trigger sequences due to faulty door pin switches or environmental conditions such as thunder, jackhammers, airport noise, etc.

Here's how it works:

The alarm triggers three times. Each time, the same sensor or switch is triggering the alarm. The three triggers are within 60 minutes of each other. Your system will interpret this pattern of triggers as false alarms. After the third trigger, your system ignores, or bypasses, that sensor or switch (along with any other sensors or switches sharing the same zone) for 60 minutes.

If the bypassed sensor tries to trigger the system while it is being bypassed, the 60-minute bypass period will start over. This ensures that a sensor that is continuously triggering will remain bypassed.

Doors are covered differently: If the alarm is triggered by an open door for three full cycles (one-and-one-half minutes), the doors will be bypassed until the trigger ceases.

***note:** Arming and disarming the system does not reset this function! The only ways to reset a bypassed zone are for it to not trigger for 60 minutes or to turn on the ignition. If testing your system, it is important to remember that this circuitry can cause zones to be bypassed and appear to stop working. If five chirps are heard when disarming, false alarm protection has engaged. If you wish to clear the memory, turn the ignition key on.*

diagnostics

The microprocessor at the heart of your system is constantly monitoring all of the switches and sensors connected to it. It detects any faulty switches and sensors and prevents them from disabling the entire system. The microprocessor will also record and report any triggers that occurred during your absence.

arming diagnostics

If the system is armed with an input active (door open, sensor triggering, etc.) the unit will chirp once when arming and then one more time a few seconds later. This is called bypass notification.

***note:** Bypass notification will not occur if chirps have been programmed OFF.*

The system will ignore the input that was active when it was armed until it goes away. Three seconds later it will monitor that input normally. For example, if your car has interior light exit delay, and you arm the system before the interior light goes out, you may get bypass notification. Once the light goes out, however, the doors are monitored normally.

disarming diagnostics

Extra disarm chirps are the tamper alert. If four chirps are heard when disarming, the system was triggered in your absence. If five chirps are heard, a zone was triggered so many times that false alarm prevention circuitry has bypassed that zone. In either case, the status LED will indicate which zone was involved (see Table of Zones section). The system will retain this information in its memory, and chirp four or five times

each time it is disarmed, until the next time the ignition key is turned on.

table of zones

The zone number is the number of LED flashes used by the system to identify that input. The standard input assignments are listed below.

ZONE (Number LED Flashes)	DESCRIPTION
1	Instant trigger - often used for hood/trunk pin switches
2	Instant trigger - a heavier impact detected by the shock sensor
3	Door switch trigger
4	Optional sensor
5	Ignition trigger

The LED will not report if the Warn Away response is triggered.

rapid resume logic

This system will store its current state to non-volatile memory. If power is lost and then reconnected the system will recall the stored state from memory. This means if the unit is in Valet® Mode and the battery is disconnected for any reason, such as servicing the car, when the battery is reconnected the unit will still be in Valet® Mode. This applies to all states of the system including arm, disarm, and Valet® Mode.

programming options

Programming options control your system's normal, operational set-up. Most options do not require additional parts, but some may require installation labor.

programming settings

The following is a list of the program settings:

*note: Factory default setting is shown in **bold**.*

note: Settings 6 and 11 are to be set by the installer.

1. **Active** or passive arming (automatic arming 30-seconds after closing the last door).
2. Arming/disarming confirmation chirps **on** or off.
3. Door Trigger Error Chirp **on** or off.
4. Ignition-controlled domelight **on** or off.
5. **Panic**/Auxiliary Channel: This unit has the ability to control an optional accessory by pressing the door lock button twice. If the auxiliary feature is activated and optional accessories are not installed, the system will not respond to pressing the lock button twice. In **panic** mode pressing the lock button twice will activate panic mode.
6. **Auxiliary Output** or Delayed Auxiliary Output (Installer only).
7. Door Trigger **delayed** or instant: In the **delayed** configuration the unit will provide a progressive response if the door is

opened while the system is armed. The system will chirp and the parking lights will flash for a few seconds followed by a full trigger response when the door is opened. In the instant mode, the system will trigger the full trigger response.

8. Sensor shunt zones **2** and **4** or All zones.
9. Siren duration - **30** seconds or 60 seconds.

note: The siren is optional and requires additional installation.

10. Valet® Pulse Count: The number of pulses of the integrated LED/Valet® switch required to disarm the security system are programmable from one to five pulses. The default setting is **one pulse**.
11. Horn pulse chirp duration (Installer only).

glossary of terms

Control Module: The “brain” of your system. Usually hidden underneath the dash area of the vehicle. It houses the microprocessor which monitors your vehicle and controls all of the alarm’s functions.

Failsafe® Starter Kill (if equipped): An automatic switch controlled by the security system which prevents the vehicle’s starter from cranking whenever the system is armed. The vehicle is never prevented from cranking when the system is disarmed, in Valet® Mode, or should the starter kill switch itself fail. Your system is ready for this feature, however installation of this feature may require additional labor.

Input: Any physical connection to the security system. An input can be provided through a sensor, pinswitch or by existing systems in the vehicle, such as ignition or courtesy lights.

Integrated LED/Valet® Switch: A small push-button switch with an integrated LED mounted somewhere in the vehicle. The switch is used to override the alarm when a transmitter is lost or damaged, or to put it into Valet® Mode. The LED indicates the status of your system. It is also used to report triggers and faults in the system or sensors. This switch is also used to program optional features.

Warn Away® Response: Light impacts to the vehicle generate the Warn Away® Response, which consists of several seconds of horn honks and flashing parking lights.

Zone: A zone is a separate input that the alarm can recognize as unique. Each input to the system is connected to a particular zone. Often, two or more inputs may share the same zone.



Cut along dotted line and fold for a quick and easy reference to keep in your purse or wallet.



QUICK REFERENCE GUIDE:

To arm the system

- You can arm the system by locking the doors with your factory keyless entry transmitter. When the system arms, you will hear a short horn honk, and see the parking lights flash once.

To disarm the system

- To disarm the system, unlock the doors using your factory keyless transmitter. You will hear two horn honks, and the parking lights will flash twice.

Disarming without a transmitter

- Turn on the ignition. Press the integrated LED/Valet® switch the programmed number of times within 10 seconds. The system should now disarm. If it does not, you may have waited too long. Turn the ignition off and on and try again.

To enter or exit Valet® Mode

- Turn ignition to “run” position, then turn to “off” position. Press and release the integrated LED/Valet® switch within 10 seconds. The status LED will light solid if you are entering Valet® Mode, and it will go out if you are exiting Valet® Mode.

Remote Valet®

- Open any door. Press the lock button on your transmitter. Within one second, press the unlock button on your transmitter. Within one second, press the lock button on your transmitter again. The status LED will stay on if you have entered Valet® Mode, and it will go out when exiting Valet® Mode.

The company behind this system is Directed Electronics, Inc.

Since its inception, Directed Electronics has had one purpose, to provide consumers with the finest vehicle security and car stereo products and accessories available. The recipient of nearly 100 patents and Innovations Awards in the field of advanced electronic technology, DIRECTED is ISO 9001 registered.

Quality Directed Electronics products are sold and serviced throughout North America and around the world.

Call **(800) 274-0200** for more information about our products and services.



DEI is an ISO 9001 registered company.

Directed Electronics is committed to delivering world class quality products and services that excite and delight our customers.



Directed Electronics, Inc.

Vista, CA 92081

www.directed.com

© 2005 Directed Electronics, Inc. - All rights reserved

G427A 01-05